

The BibleTime Handbook

**Fred Saalbach
Jeffrey Hoyt
Martin Gruner
Thomas Abthorpe
Gary Holmlund**

The BibleTime Handbook

by Fred Saalbach, Jeffrey Hoyt, Martin Gruner, Thomas Abthorpe, and Gary Holmlund

3.0.0+

Copyright © 1999-2021 The BibleTime Team

Abstract

BibleTime is a completely free Bible study program. The program's user interface is built with the Qt framework, which makes it run on several operating systems including Linux, Windows, FreeBSD and Mac OS X. The software uses the SWORD programming library to work with over 900 free Bible texts, commentaries, dictionaries and books in over 50 languages provided by the Crosswire Bible Society and several other repositories.

The BibleTime Handbook is distributed with the BibleTime study program.

Table of Contents

1. #####	1
# BibleTime	1
#####	1
#####	1
2. Starting BibleTime	3
How to start BibleTime	3
Starting BibleTime	3
Startup customization	3
Starting BibleTime for the first time	3
3. #####	4
#####	4
##### BibleTime	4
#####	4
Mag(#####)	5
#####	6
##### #	6
Searching text in an open read window	6
Accessing the search dialog	7
Search configuration	7
Search results	8
The Bookshelf Manager	9
Install works	9
Update works	9
Remove works	10
Exporting and Printing	10
4. ##### BibleTime	11
##### BibleTime	11
#####	11
#####	11
#####	11
#####	13
5. #####	15
Main menu reference	15
File	15
View	15
Search	16
Window	16
Settings	17
Help	17
Works reference	18
	18
Shortcuts index	19

List of Tables

3.1. Search Types	8
4.1. ##### Unicode	13

Chapter 1.

BibleTime

BibleTime - ### ##### # ##### # ##### # ##### # ##### # #####.
#####. ## ##### # #####
SWORD [http://www.crosswire.org/sword/], ##### # ##### # ##### # #####
BibleTime, ##### # ##### # ##### # #####, ##### # #. #. SWORD ##### # #####
Crosswire Bible Society [http://www.crosswire.org].

BibleTime ##### # ##### # #####, ##### # ##### #
#####, ##### # ##### SWORD. ##### # ##### # #####
[http://www.crosswire.org/sword/develop/index.jsp]
SWORD, Crosswire Bible Society.

#####

280 ##### # 50 ##### # Crosswire Bible Society [http://www.crosswire.org].
#####:

#####, # #####, ##### # #####
#####, ##### #/### # #####. ##### # #####
#####, ## # #####
#####, ##### # Codex Leningradensis ("WLC", #####) # #####
("LXX", #). ## # ##### # ##### # #####
SWORD.

"#####", "#####" # "#####
#####: ##### # #####"

#####, ##### #
"##### # #####" ##### #, ##### #
"##### # #####" #####." # ##### ##### #
#####.

#####. #####
#####.

#####: ## # #####
#####.

#####, ##### # ##### # #####, #####
1913 ##,
#####.

#####, ##### BibleTime ##### # #####.

#####

##, ##### # ##### # ##### # ##### # ## # ##### # ##.
#####, ##### # ##### # ##### # ##### #
#####. ## #, ##### # #####, ## # - ##### #
###.

#####, ## ##### ##
#####.

—##### 1:17, RST

##, ##### ## ##### ##### ## #####.

Chapter 2. Starting BibleTime

How to start BibleTime

Starting BibleTime

BibleTime is an executable file that is integrated with the desktop. You can launch BibleTime from the Start Menu with this icon:



BibleTime can also be launched from a terminal command prompt. To launch BibleTime, open a terminal window and type:

```
bibletime
```

Startup customization

From a terminal you can use BibleTime to open a random verse in the default bible:

```
bibletime --open-default-bible "<random>"
```

To open at a given passage like John 3:16, use:

```
bibletime --open-default-bible "John 3:16"
```

You can also use booknames in your current bookname language.

Starting BibleTime for the first time

If you are starting BibleTime for the first time, you will want to configure the following options, available under the Settings menu bar.

Bookshelf Manager

Modifies your Bookshelf. This dialog lets you modify your Bookshelf, add or delete works from your system. It will only be shown if no default Bookshelf can be found. Please see The Bookshelf Manager section for further details. If you start off with an empty Bookshelf, it will be helpful to install at least one Bible, Commentary, Lexicon and one Book to get to know BibleTime's basic features quickly. You will be presented with a list of works that are available from the Crosswire Bible Society and other repositories;

Configure BibleTime dialog

Customizes BibleTime. This dialog lets you adapt BibleTime to your needs. Please see the detailed description of this dialog.

Chapter 3.

#####

BibleTime :



"Mag" #####

#####

#####

BibleTime

#####

"#####"
#####

#####

-### #####, ### ##### BibleTime. ##### ## #####
#####, ##### ##, ##### # ## # ##### #
(##.#####).

#####

#####, ## ##### ##### ##, ##### ## ## ##### ##
#. ##### ##### ##. ##### ## #####
##, # ##### ##, # #####
#####, ##### ##, ##### ## #####.

#####

The currently active window can be auto scrolled up or down. Start scrolling by press Shift+Down. You can increase the scrolling speed by pressing Shift+Down multiple times. To pause scrolling press Space. To start scrolling again at the previous speed press Space again. To slow down scrolling or scroll the other direction press Shift+Up one or more times. Pressing any other key or changing the active window will stop the scrolling.

Read window placement

Of course, you can open multiple works at the same time. There are several possibilities for arranging the read windows on the desk. Please have a look at the entry Window in the main menu. There you can see that you can either control the placement of the read windows completely yourself, or have BibleTime handle the placement automatically. To achieve this, you have to select one of the automatic placement modes available at Window → Arrangement mode. Just try it out, it's simple and works.

Editing your own commentary

To be able to store your own comments about parts of the Bible, you have install a certain work from the library of the Crosswire Bible Society [<http://www.crosswire.org>]. This work is called "Personal commentary".

Open the personal commentary by clicking on its symbol in the Bookshelf with a left mouse button. You can edit this commentary by just clicking on any verse. A dialog opens which allows you to add or edit text for that verse.

Tip

If Edit this work is deactivated, please check if you have write permission for the files of the personal commentary.

Tip

Drag & drop works here. Drop a verse reference and the text of the verse will be inserted.

#####

Searching text in an open read window

You can look for a word or phrase in the open read window (e.g. the chapter of a bible that you're reading) just like you are used to from other programs. This function can be reached either by clicking with the

right mouse button and selecting Find..., or by using the shortcut **CtrlF**. Read on to learn how you can search in entire works.

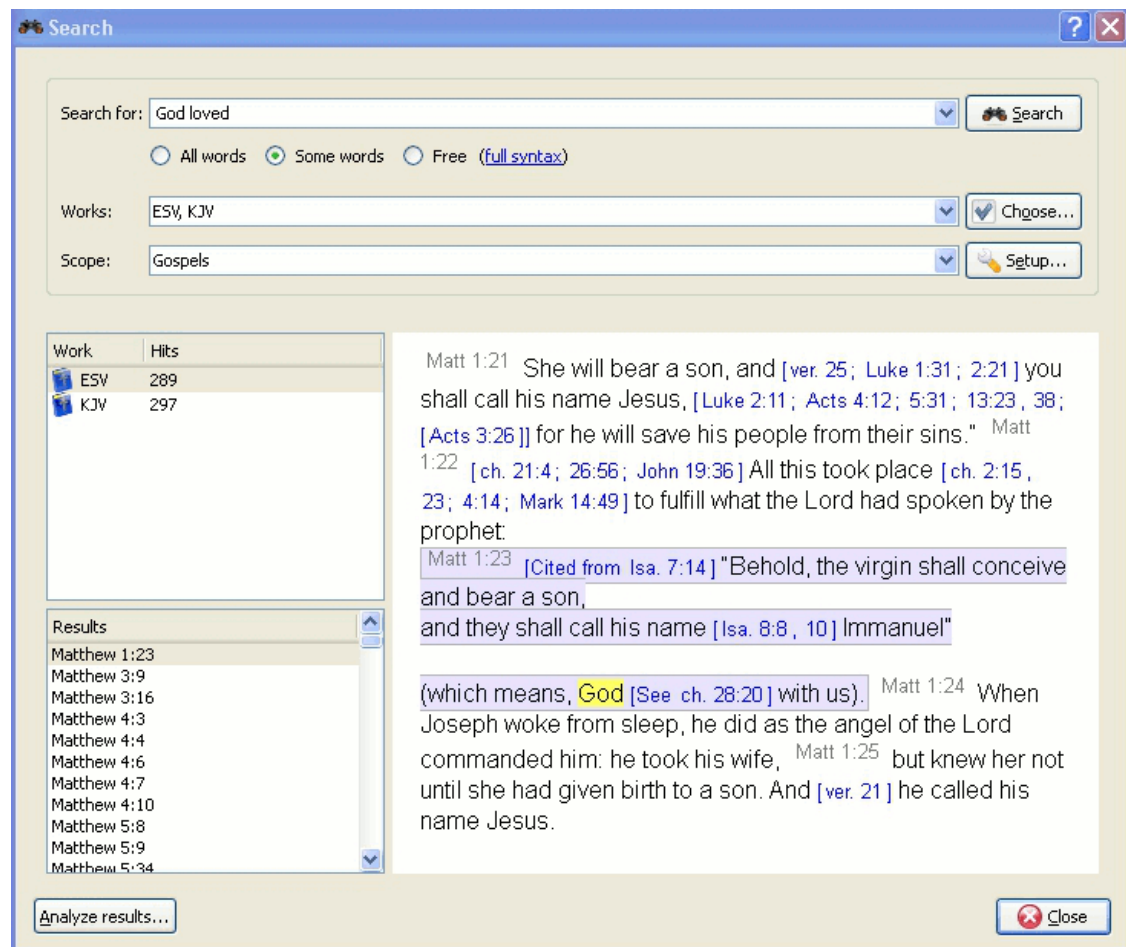
Accessing the search dialog

You can search in a work by clicking with the right mouse button on its symbol in the Bookshelf and selecting Search in work(s). By holding Shift or Ctrl and clicking on other work's names you can select more than one. Then follow the same procedure to open the search dialog. You will be searching in all of these works at the same time.

You can also access the search dialog by clicking on Search from the main menu, and selecting the appropriate entry.

A third possibility to start searches is to click on the search symbol in an open read window.

Search configuration



Selecting works

At the top of the options tab you will find Choose(work(s)). If you would like to search in multiple works, click on this button and you will be offered a menu where you can select the works you want to search in.

Using Search Scopes

You can narrow the scope of your search to certain parts of the Bible by selecting one of the predefined scopes from the list in Search scope. You can define your own search ranges by clicking the Setup ranges button.

Basic Search Syntax Introduction

Enter the search phrase separated by spaces. By default the search function will return results that match all the words. If you want to find any of the words entered, select the Some words button. If you want to perform a more complex search, select the Free button. You can see examples of searches by clicking on full syntax.

You can use wildcards: '*' matches any number of characters, while '?' will match any single character. The use of parenthesis allows you to group your search terms, e.g. '(Jesus OR spirit) AND God'.

To search text other than the main text, enter the text type followed by ':', and then the search term. Refer to the table below for examples.

Available text types:

Table 3.1. Search Types

Prefix	Meaning	Example
heading:	searches headings	heading:#####
footnote:	searches footnotes	footnote:Moses
strong:	searches Strong's Numbers	strong:G535
morph:	searches morphology codes	morph:N-GSM

Tip

You can right click on an installed work and select About to find which of the above search criteria may work for you. Not all works have the built in features for performing this type of search.

BibleTime uses the Lucene search engine to perform your searches. It has many advanced features, and you can read more about it here: <http://lucene.apache.org/java/docs/index.html> [<http://lucene.apache.org/java/docs/index.html>].

Search results

Here you can see how many instances of the search string were found, sorted by works. Clicking on a work with the right mouse button allows you to copy, save, or print all verses that were found in a certain work at once. This also works when you click on one or more of the references to copy, save or print them. Clicking on a particular reference opens that verse up in context in the preview window below.

Tip

Drag a reference and drop it on a work symbol on the Bookshelf to open the work at that verse in a new read window.

Tip

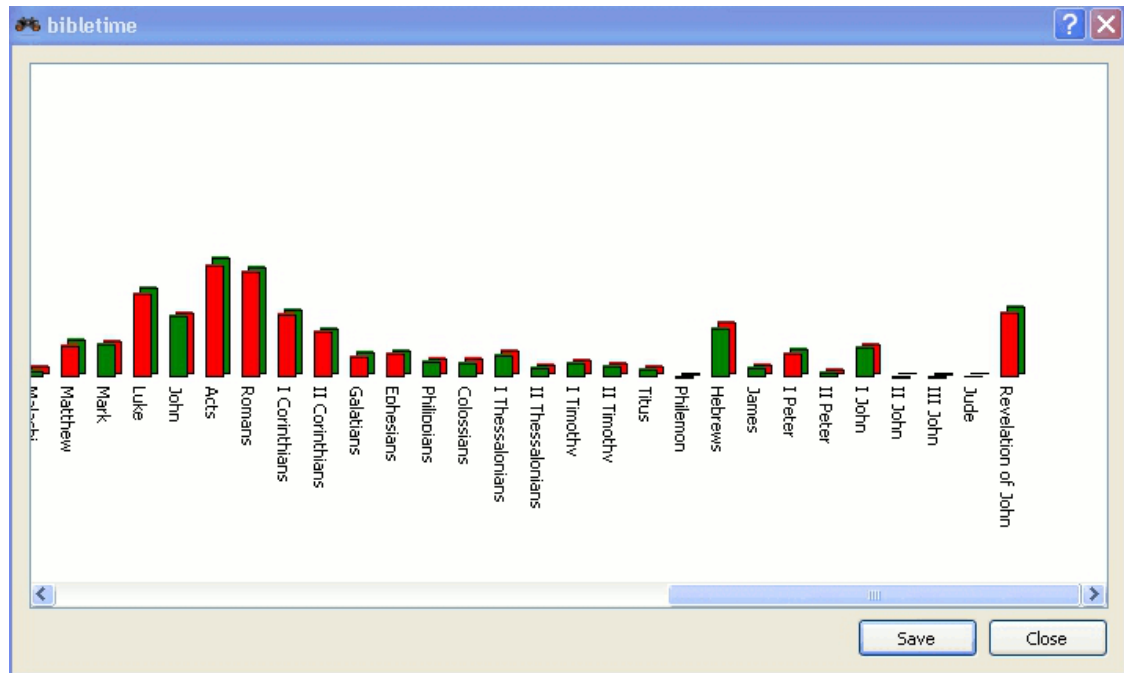
Drag a reference and drop it on an open read window, and it will jump to that verse.

Tip

Select references and drag them to the Bookshelf to create bookmarks.

Search result analysis

Click on Search analysis to open the search analysis display. This gives a simple graphic analysis of the number of instances the search string was found in each book of the Bible, and you can also save the analysis.



The Bookshelf Manager

The Bookshelf Manager is a tool to manage your Bookshelf. You can install new works to your Bookshelf, and update or remove existing works from your Bookshelf. Access it by clicking Settings → Bookshelf Manager in the main menu.

Install works

With this facility, you can connect to a repository of works (called "library"), and transfer one or more works to your local Bookshelf. These libraries may be local (e.g. a SWORD CD), or remote (e.g. Crosswire's online repository of SWORD modules, or another site offering SWORD modules). BibleTime will automatically maintain a list of remote libraries and the works available from them.

To begin the installation process, select one or more libraries that you want to install works from. Then click on the Next button. Then select one or more languages and click the Next button. You will see a list of categories. Double-click on a category to see works for that category. Select one or more works and then click on the Install Works. After the works are installed, click on the Finish.

Update works

If there are any works that can be updated, they will be shown. Select one or more work and click the Update Works. After the works are updated, click on the Finish.

Remove works

This facility allows you to delete one or more of the works from your Bookshelf too free up disk space. Simply choose the works` and click on the Remove works button.

Exporting and Printing

In many places, you can open a context menu by clicking with the right mouse button. Depending on context, it will allow you to Select, Copy (to clipboard), Save or Print text. This works for example in the read windows, when you click on the normal text or the verse reference, or in the search result page when you click on a work or one or more verse references. It is pretty straightforward, so just try it out.

Printing from BibleTime is rather basic and is intended as a utility. If you are composing a document or presentation containing text from BibleTime works, we suggest that you use one of the presentation or editing tools on your system to format your document, rather than printing from BibleTime directly.

Chapter 4. ##### BibleTime

BibleTime, ##### ##### # ##### #####
#.

BibleTime

BibleTime ##### ##### ##### ##### # #####
#####. ## ##### ##### # #####, #####
BibleTime.

####

#####. ##### ## #####:

- #####

(####, ##### #.#.). #####
#####. #### ## ##### ## ##, ## #####
#####.

#####

SWORD #####
BibleTime. ## ##### # #####. # ##
#####., #####
#####. #####: #####
#####. ##### ## #####, #####
#####. ##### ## #####, #####
#####. # #####

####

#####, ##### #####
#####, ##

BibleTime ##### ##
#####. #####

#####.



"#####" - #####.

BibleTime #####. ## ### ##, #####
 #####, ##### ## #####. #####
 ##### # ##### (????) #####, ## ##, #####
 #####, #####, #####.

#####. #####. #####, #####, #####
 ##### Code2000. ##### ## #####
 #####, #####, #####.

#####

#####. ##
 ##### # Unicode ##### [http://
 www.linux.org/docs/ldp/howto/Unicode-HOWTO-2.html].

#####:

- ##### *nix.
- #####.
- ## ##### Microsoft Windows®.

- #####, #####, ##### # Adobe ### Bitstream.
- #####-#####.

Unicode #####, ###, # #####
 #####. ## ##, #####
 # ##### Unicode, ## #####

Table 4.1. ##### Unicode

Code2000 [http://code2000.net/CODE2000.ZIP]	#####, ##### Unicode, #####.
SIL unicode ##### [http://scripts.sil.org/cms/scripts/page.php?site_id=nrsi&cat_id=FontDownloads]	##### Unicode ## #####.
##### [http://www.nongnu.org/free-font/]	##### Unicode.
##### Crosswire [ftp://ftp.crosswire.org/pub/sword/iso/latest/FONTS/]	##### # FTP-##### Crosswire Bible Society.
Bitstream CyberBit [http://aol-4.vo.llnwd.net/pub/communicator/extras/fonts/windows/]	##### Unicode, ## ##### BibleTime ##-## ##.
Clearlyu	#####. #####, #####, #####.
Caslon, Monospace, Cupola, Caliban [http://font-forge.sourceforge.net/sfds/]	#####, ##. ##### ##.

Unicode, ##### Christoph Singer (##### Unicode TrueType # ##### [http://www.slovo.info/unifonts.htm]) ### Alan Wood (##### Unicode # ##### Unicode, ## ##### [http://www.alanwood.net/unicode/fontsbyrange.html]).

#####

(#####) - #####, #####
 ##### BibleTime #####
 ##### BibleTime #####
 ##### BibleTime #####
 #####.



F2, Bible Study #####
CTRL+2.

Chapter 5.

Main menu reference

In this section you can find detailed descriptions of all entries in the main menu of BibleTime. They are ordered in just the way they appear in BibleTime, with all the sub-items listed under the major menu item they belong to. You can also see the shortcut of each item;a complete listing of all shortcuts can be found in the shortcuts section.

File



File Open work

Open work. This will give you a menu that will allow you to open installed books.



File →
Quit (**Ctrl+Q**)

Closes BibleTime. BibleTime will ask you if you want to write unsaved changes to disk.

View

→



View Fullscreen mode
(**F5**)

Toggles full screen display. Toggle this setting to maximize the BibleTime window.



→
View Show Bookshelf

Toggles display of the Bookshelf. Toggle this setting to turn the Bookshelf on the left pane on or off. This can be handy if you need more space for the Mag.



→
View Show Bookmarks

Toggles display of the Bookmarks. Toggle this setting to turn the Bookmarks on the left pane on or off. This can be handy if you need more space for the Mag.



→
View Show Mag

Toggles display of the Mag(nifying glass). Toggle this setting to turn the Mag on the left pane on or off.



→
View Show parallel text
headers

Toggles viewing of additional works Toggle this setting to allow you to view additional works in parallel to your current open books.

View → Toolbars → Show main
(**F6**)

Toggles Main Toolbar display. Toggle this setting to turn the main toolbar on or off.

View → Toolbars → Show navigation

Toggles Navigation in works. Toggle this setting to add or remove the navigation combo box in works. This can be handy to view the full toolbar in the open works

View → Toolbars → Show works

Toggles Toolbars in works. Toggle this setting to add or remove the works icons in the open works.

View → Toolbars → Show tools

Toggles tools in works. Toggle this setting to add or remove the tools icons in the open works.

View → Toolbars → Show format

Toggles format. Toggle this setting when editing HTML in Personal Commentaries. It will add or remove the formatting toolbar.

View → Toolbars → Show toolbars in text windows

Toggles toolbars in works. Toggle this setting to add or remove the complete toolbar in open works.

Search

Search Search in standard bible (**Ctrl+Alt+F**)Search Search in open work(s) (**Ctrl+O**)

Opens the Search Dialog to search in the standard Bible only. More works can be added in the Search Dialog. A more detailed search description can be found in the Searching in works section.

Opens the Search Dialog to search in all open works. Works can be added or removed in the Search Dialog. A more detailed search description can be found in the Searching in works section.

Window

Window Close window (**Ctrl+W**)Window Close all (**Ctrl+Alt+W**)Window Cascade (**Ctrl+J**)Window Tile (**Ctrl+I**)Window Tile vertically (**Ctrl+G**)Window Tile horizontally (**Ctrl+H**)

Window → Arrangement mode

Closes active window.

Closes all open windows.

Cascades all open windows.

Tiles all open windows.

Automatically tiles all open windows vertically.

Automatically tiles all open windows horizontally.

Controls the basic window arrangement behaviour. In the opening context menu, you can either specify that you want to take care

Window → Save session

of the window arrangement yourself (Manual mode), Tabbed, Auto-tile vertically, Auto-tile horizontally, Auto-tile or Auto-cascade. Just try them out!

Directly saves the current session. This will open a context menu where you can select an existing session to save to. It will be overwritten with your current session. See the next item on how to save to a new session.

Window → Save as new session
(**Ctrl+Alt+S**)

Saves the current session under a new name. This will ask for a new name to save the session to.


Window → Load session

Loads an existing session. This will open a context menu where you can select an existing session to load.


Window → Delete session

Deletes an existing session. This will open a context menu where you can select an existing session that should be deleted.

Settings


 Settings → Configure
BibleTime

Opens BibleTime's main configuration dialog. You can configure all kinds of nice settings there to adapt BibleTime to your needs. Please see the Configuring BibleTime section for details.


 Settings → Bookshelf
Manager (**F4**)

Opens a dialog where you can change your SWORD configuration and manage your bookshelf. Please see the Bookshelf Manager section for details.


Help

 Help → Handbook (**F1**)

Opens BibleTime's user guide You are reading it now.

 Help → Bible Study How-
To (**F2**)

Opens a guide on how to study the Bible It is the hope of the BibleTime team that this HowTo will provoke the readers to study the scriptures to see what they say. This particular study guide has been chosen as it takes care not to advocate any particular denominational doctrine. We expect you to read and study the scriptures to understand what they say. If you start with the attitude that you want to have the Lord sow his word in your heart He will not disappoint you.

 Help → Tip of the Day (**F3**)

Opens a helpful tip The Tip of the Day provides a useful tip that will assist in the use of BibleTime.

Help → About

Opens a window about BibleTime project information contains information about BibleTime software version, project contributors, SWORD software version, Qt software version and the license agreement.

Works reference

In this section you can find descriptions of the icons associated with open works.



Scrolls forward through history.



Scrolls back through history.



Select an installed bible.



Select an additional bible.



Search in selected works.



Display configuration.



Select an installed commentary.



Select additional commentary.



Synchronize displayed entry with active Bible window.



Select a book.



Select an installed glossary or devotional.



Select an additional glossary or devotional.

Shortcuts index

This is an index of all shortcuts and their corresponding description in the handbook. The shortcuts are sorted (roughly) alphabetical. If you want to directly find out which shortcuts a certain menu item has, you can either look at the entry itself in BibleTime (as it always shows the shortcut), or you can look it in the Main Menu reference.

Shortcut	#####
Alt+Left	Moves back in the history of read windows.
Alt+Right	Moves forward in the history of read windows.
Ctrl+Alt+F	Search → Search in default bible equivalent; opens the search dialog to search in the default bible.
Ctrl+Alt+G	Window → Arrangement mode → Auto-tile vertically equivalent; toggle automatic window tiling.
Ctrl+Alt+H	Window → Arrangement mode → Auto-tile horizontally equivalent; toggle automatic window tiling.
Ctrl+Alt+I	Window → Arrangement mode → Auto-tile equivalent; toggle automatic window tiling.
Ctrl+Alt+J	Window → Arrangement mode → Auto-cascade equivalent; toggle automatic window cascading.
Ctrl+Alt+M	Window → Arrangement mode → Manual mode equivalent; toggle manual window placement.
Ctrl+Alt+T	Window → Arrangement mode → Tabbed equivalent; organizes windows with tabs across the top.
Ctrl+Alt+S	Window → Save as new session equivalent; saves current layout as new session.
Ctrl+Alt+W	Window → Close all equivalent; closes all open windows.
Ctrl+A	Select all. This selects all text in read windows.
Ctrl+C	Copy. This copies the selected text to the clipboard.
Ctrl+F	Search. This lets you search within the text of a read window.
Ctrl+G	Window → Tile vertically equivalent.
Ctrl+H	Window → Tile horizontally equivalent.
Ctrl+I	Window → Tile windows equivalent.
Ctrl+J	Window → Cascade windows equivalent.
Ctrl+L	Change location. Changes focus to the toolbar field for the selected work.
Ctrl+N	Search with works of this window.
Ctrl+O	Search → Search in open work(s) equivalent; opens the search dialog to search in all currently opened works.
Ctrl+Q	File → Quit equivalent; closes BibleTime.
Ctrl+W	Closes the current window.

Shortcut	#####
F1	Help → Handbook equivalent; opens the handbook.
F2	Help → BibleStudy HowTo equivalent; opens the BibleStudy HowTo.
F3	Help → Tip of the Day Opens a helpful tip to use BibleTime.
F4	Settings → Bookshelf Manager equivalent; opens the Bookshelf Manager.
F8	View → Show Bookshelf equivalent; toggles display of the Bookshelf.
F9	View → Show mag equivalent; toggles display of the mag(nifying glass).
Shift+Down	View → Auto scroll down
Shift+Up	View → Auto scroll up
Space	View → Auto scroll pause