

The BibleTime Handbook

**Fred Saalbach
Jeffrey Hoyt
Martin Gruner
Thomas Abthorpe
Gary Holmlund**

Table of Contents

1. #####	1
### BibleTime	1
#####	1
#####	1
2. Starting BibleTime	3
How to start BibleTime	3
Starting BibleTime	3
#####	3
Starting BibleTime for the first time	3
3. #####	4
#####	4
##### BibleTime	4
#####	4
(#####) #####	5
#####	6
##### # #####	7
##### # #####	7
##### # #####	7
#####	7
#####	8
#####	9
#####	9
#####	10
#####	10
##### # #####	10
4. ##### BibleTime	11
##### BibleTime	11
#####	11
#####	11
#####	11
#####	13
5. #####	15
##### # #####	15
#####	15
#####	15
#####	16
#####	16
#####	17
#####	17
#####	18
.....	18
#####	19

List of Tables

3.1. #####	8
4.1. #####	13

Chapter 1.

BibleTime

BibleTime — ## ##### ## ##### # ##### # ##### # ##### # ##.
#'### ##### # ##### # ##### # ##### # #####. ### ##### ##
SWORD [http://www.crosswire.org/sword/], ## ##### # #####
BibleTime, ### ## ##### # #####, ##### ####. SWORD # #####
Crosswire Bible Society [http://www.crosswire.org].

BibleTime ##### ## ##### # ######, ##### # ##### # ######,
SWORD. ##### ###### ###### ###### ######
[http://www.crosswire.org/sword/develop/index.jsp] ##### SWORD,
Crosswire Bible Society.

##

280 ##### 50-## ##### # Crosswire Bible Society [http://www.crosswire.org].
#####:

#####, ##### ## ######
#####, ##### #/## ###### # #####. ##### ######
######, ## # ######
#####, ### # Codex Leningradensis ("WLC", #####) # ######
("LXX", ######). ## ###### # ###### ######
SWORD.

"##### #", "##### #"
"##### #": ##### ######"

######, ##### # "##### #"
#####" ##### ######, ###### ###### # "##### # ######"
#####." ## ###### ###### ###### ###### ######
######.

######.
######.

#####/##### ###### ######: ## ###### ######
######.

#####, ###### ###### ###### ######, ###### #
1913 ####, ######
##.

######, ## BibleTime #### ###### ######.

#####

####, ## ###### ###### ###### ###### # # ######
####. ## ###### ###### # ######, ###### ###### # #### ###### ###### #
######. ## ######, ## ###### ######, ## #### — ###### ###### ######.

#####

#####

—##### 1:17, NASB

#####

Chapter 2. Starting BibleTime

How to start BibleTime

Starting BibleTime

```
BibleTime — ## ##### ##, ##### ## #####. ## ##### BibleTime
## ## '##' ## ##### ## ##:
```



```
BibleTime ##### ## ## ##### ## ##### ##. ## ##### BibleTime,
##### ## ## ##:
```

```
bibletime
```

#####

From a terminal you can use BibleTime to open a random verse in the default bible:

```
bibletime --open-default-bible "<random>"
```

To open at a given passage like John 3:16, use:

```
bibletime --open-default-bible "John 3:16"
```

You can also use booknames in your current bookname language.

Starting BibleTime for the first time

If you are starting BibleTime for the first time, you will want to configure the following options, available under the Settings menu bar.

```
#####
```

Modifies your Bookshelf. This dialog lets you modify your Bookshelf, add or delete works from your system. It will only be shown if no default Bookshelf can be found. Please see The Bookshelf Manager section for further details. If you start off with an empty Bookshelf, it will be helpful to install at least one Bible, Commentary, Lexicon and one Book to get to know BibleTime's basic features quickly. You will be presented with a list of works that are available from the Crosswire Bible Society and other repositories;

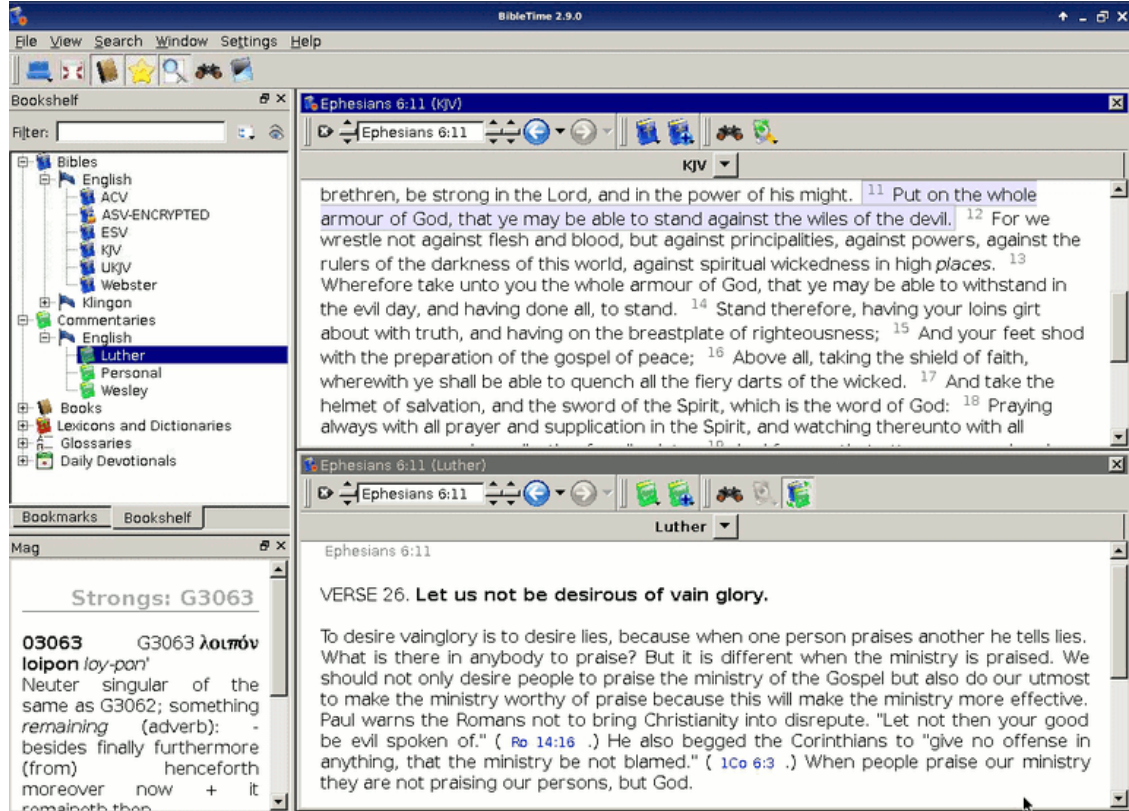
```
Configure BibleTime dialog
```

Customizes BibleTime. This dialog lets you adapt BibleTime to your needs. Please see the detailed description of this dialog.

Chapter 3.

#####

BibleTime :



"Mag" #####

#####

#####

BibleTime

#####

#####

#####

(#####, #####, #####, #####, #####),
#####. # #####

(#####) # #####
#####

#####

[http://www.crosswire.org/sword/modules/aboutlocked.jsp] # ##### Crosswire Bible Society.

#####

Shift #

#####

Tip

& #####

#####

#####

#####

(#####) #####

BibleTime # #####
#####

#####

#####

You can look for a word or phrase in the open read window (e.g. the chapter of a bible that you're reading) just like you are used to from other programs. This function can be reached either by clicking with the right mouse button and selecting Find..., or by using the shortcut **CtrlF**. Read on to learn how you can search in entire works.

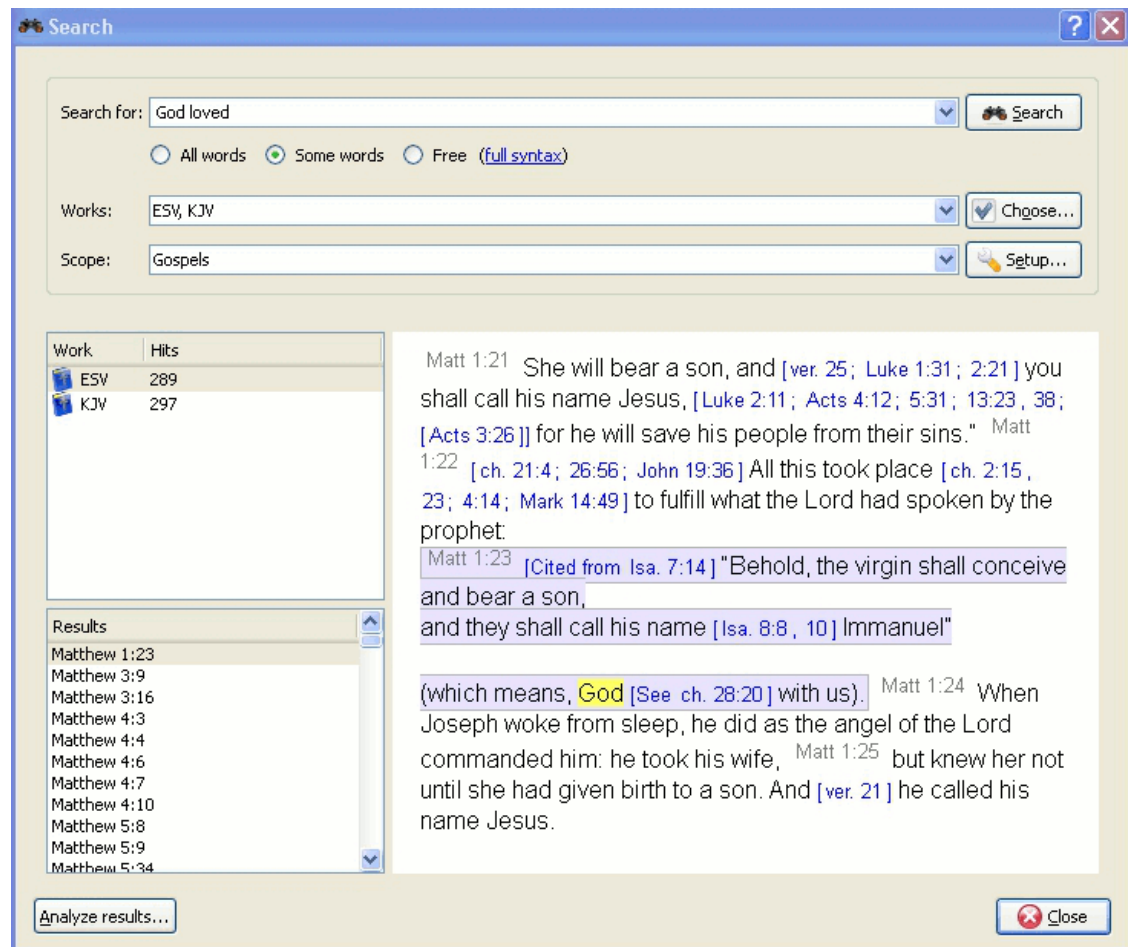
#####

You can search in a work by clicking with the right mouse button on its symbol in the Bookshelf and selecting Search in work(s). By holding Shift or Ctrl and clicking on other work's names you can select more than one. Then follow the same procedure to open the search dialog. You will be searching in all of these works at the same time.

You can also access the search dialog by clicking on Search from the main menu, and selecting the appropriate entry.

— ## ##### # ##### # ##### # ##### # ##### # ##### # ##### # ##### # ##### #

#####



#####

At the top of the options tab you will find Choose(works). If you would like to search in multiple works, click on this button and you will be offered a menu where you can select the works you want to search in.

#####

You can narrow the scope of your search to certain parts of the Bible by selecting one of the predefined scopes from the list in Search scope. You can define your own search ranges by clicking the Setup ranges button.

#####

Enter the search phrase separated by spaces. By default the search function will return results that match all the words. If you want to find any of the words entered, select the Some words button. If you want to perform a more complex search, select the Free button. You can see examples of searches by clicking on full syntax.

You can use wildcards: '*' matches any number of characters, while '?' will match any single character. The use of parenthesis allows you to group your search terms, e.g. '(Jesus OR spirit) AND God'.

To search text other than the main text, enter the text type followed by ':', and then the search term. Refer to the table below for examples.

#####:

Table 3.1. #####

#####	#####	#####
#####:	##### # #####	#####:#####
#####:	##### # #####	#####:#####
#####:	##### #####	#####:G535
#####:	##### #####	#####:N-GSM

Tip

You can right click on an installed work and select About to find which of the above search criteria may work for you. Not all works have the built in features for performing this type of search.

BibleTime ##### Lucene ### #####. ### ## #####
#: <http://lucene.apache.org/java/docs/index.html> [<http://lucene.apache.org/java/docs/index.html>].

#####

Here you can see how many instances of the search string were found, sorted by works. Clicking on a work with the right mouse button allows you to copy, save, or print all verses that were found in a certain work at once. This also works when you click on one or more of the references to copy, save or print them. Clicking on a particular reference opens that verse up in context in the preview window below.

Tip

Drag a reference and drop it on a work symbol on the Bookshelf to open the work at that verse in a new read window.

Tip

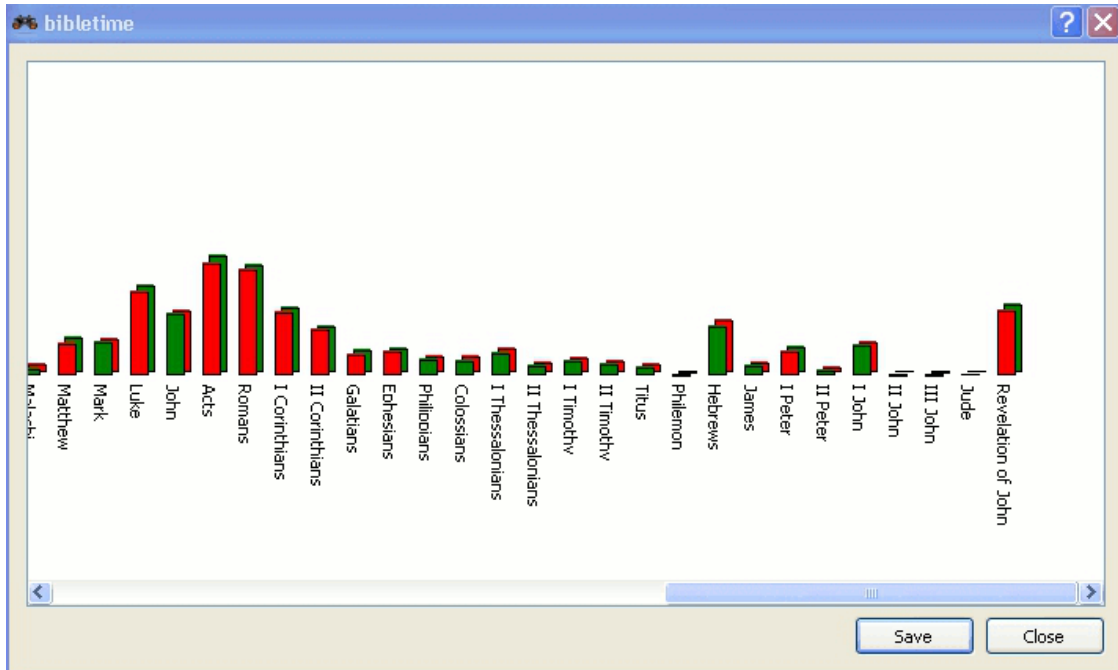
#, # ##### ##
#####.

Tip

#, ## #####.

#####

Click on Search analysis to open the search analysis display. This gives a simple graphic analysis of the number of instances the search string was found in each book of the Bible, and you can also save the analysis.



#####

The Bookshelf Manager is a tool to manage your Bookshelf. You can install new works to your Bookshelf, and update or remove existing works from your Bookshelf. Access it by clicking Settings → Bookshelf Manager in the main menu.

#####

(# #####
'#####') ## ##### ##, ## ##### ## ##### ## ##
(######, SWORD CD), ## #####
#####-##### ##### SWORD Crosswire, ## #####
SWORD) BibleTime ##### # ##### # ## #####.

To begin the installation process, select one or more libraries that you want to install works from. Then click on the Next button. Then select one or more languages and click the Next button. You will see a list

of categories. Double-click on a category to see works for that category. Select one or more works and then click on the Install Works. After the works are installed, click on the Finish.

#####

If there are any works that can be updated, they will be shown. Select one or more work and click the Update Works. After the works are updated, click on the Finish.

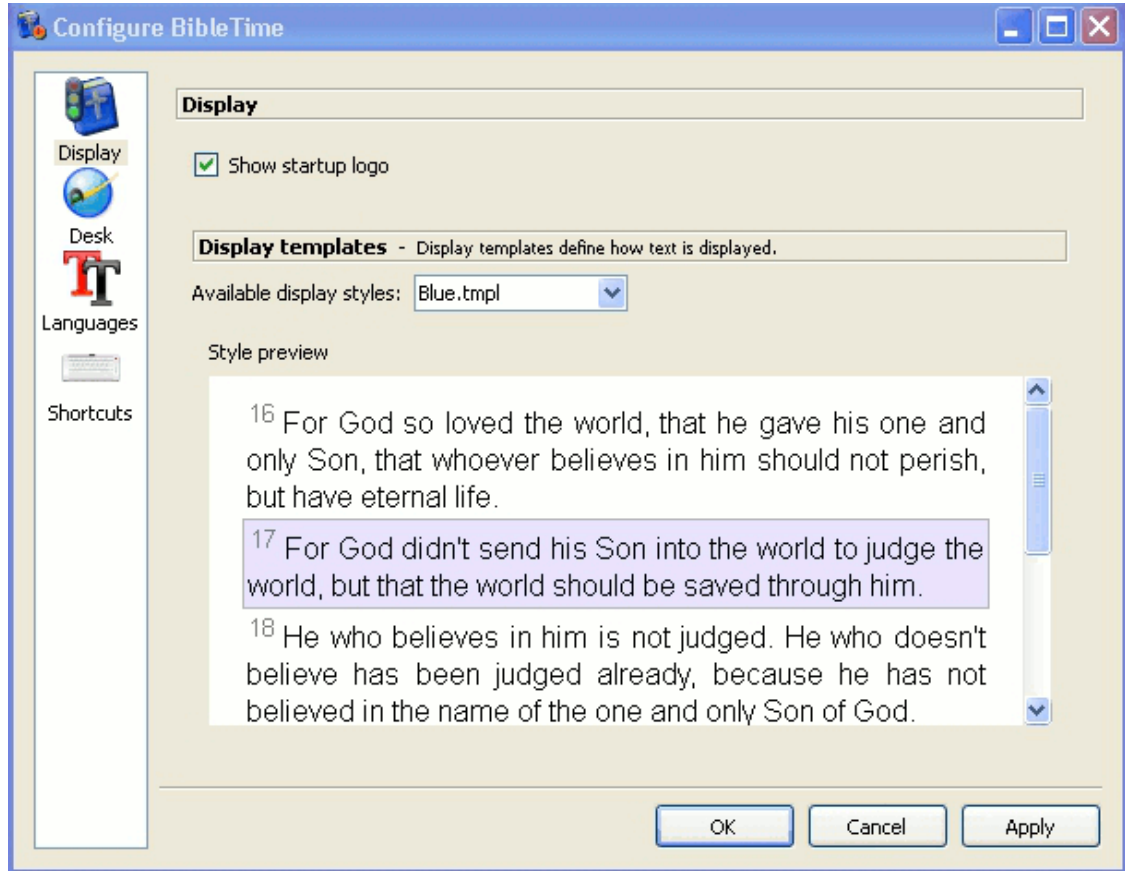
#####

This facility allows you to delete one or more of the works from your Bookshelf too free up disk space. Simply choose the works` and click on the Remove works button.

#####

In many places, you can open a context menu by clicking with the right mouse button. Depending on context, it will allow you to Select, Copy (to clipboard), Save or Print text. This works for example in the read windows, when you click on the normal text or the verse reference, or in the search result page when you click on a work or one or more verse references. It is pretty straightforward, so just try it out.

BibleTime # ##### # ##### # ##### # #####. #### ## ##### # #####,
#####, ## ##### # ##### BibleTime, ## ##### # ##### # #####
#####, ### ##### # ##### # ##### # ##### # #####, # ##
BibleTime #####.



-

BibleTime ##### **#####** #####. ####, #### ##### **### ###**
 ##### **#####**, **### ##### #** ##### **#####**. **#### #####** ##### **#**
 ##### **#####** **#####** (?????), **## #####** **#####**, **## ## #####**, **## #####** **#####** **#####**
 ##### **## #####** **#####**, **#####** **#####** **# #####** **#####**.

**##**, **#####** **#### #####** **# #####** **####**. **#####** **#####**
**#####** **#####**. **#####** **#####** **#####**. **#####**, **#####**, **## #####**
**###**, **#####** **Code2000**. **#### #####** **#####** **## #####** **#####** **#####** **###**
#####, **#####** **#####** **#####** **#####** **### #####** **####**.

#####

**#####** **##** **#####** **#####** **#####** **##** **#####** **#####** **#####**. **###**
**#####** **#####** **##** **#####** **#####** **##** Unicode HOWTO [<http://www.linux.org/docs/ldp/howto/Unicode-HOWTO-2.html>].

**#####** **####** **#####** **#** **#####** **#####**:

- **###** **#####** ***nix**.
- **#####** **#####** **#####** **#####**.
- **##** **#####** **#####** **#####** **Microsoft Windows®**.

- #####, #####, ##### # Adobe, ## Bitstream.
- #####. #####.

Unicode #####, ### #####, ## ##### # #####
 #####. ##### # ##### # ##### # ##### # #####, ##### # #####
 Unicode, ##### # ##### # ##### # ##### # ##### # ##### # #####.

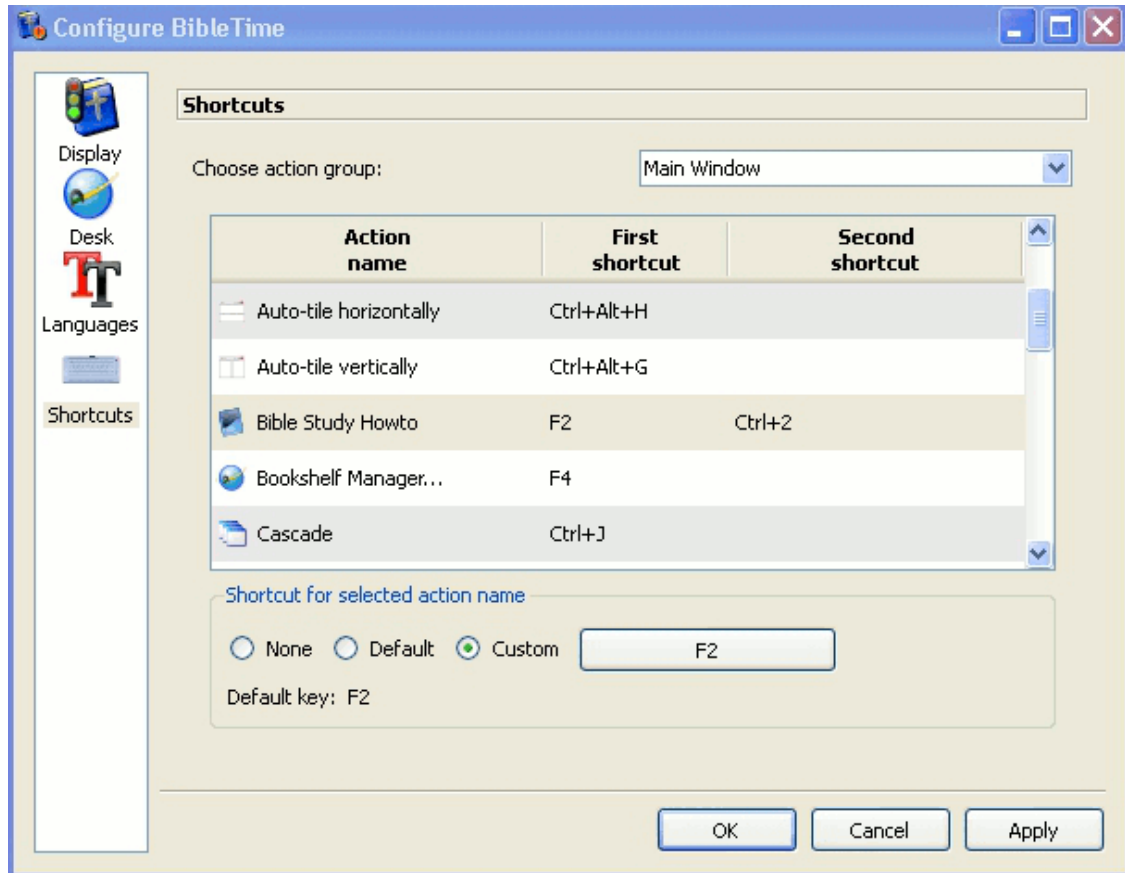
Table 4.1. #####

Code2000 [http://code2000.net/CODE2000.ZIP]	#####, ##### Unicode, ## #####.
SIL ##### [http://scripts.sil.org/cms/scripts/page.php?site_id=nrsi&cat_id=FontDownloads]	##### Unicode ### Summer M#####.
FreeFont [http://www.nongnu.org/freefont/]	##### Unicode.
Crosswire ##### [ftp://ftp.crosswire.org/pub/sword/iso/latest/FONTS/]	##### # FTP-##### Crosswire Bible Society.
Bitstream CyberBit [http://aol-4.vo.llnwd.net/pub/communicator/extras/fonts/windows/]	##### Unicode, ### ##### BibleTime #-## #####.
Clearlyu	#####. #####, #####, #####.
Caslon, Monospace, Cupola, Caliban [http://fontforge.sourceforge.net/sfds/]	#####. ##### # #####.

Unicode, ##### Christoph Singer (##### Unicode TrueType # ##### [http://www.slovo.info/unifonts.htm]) ## Alan Wood (##### Unicode ## ##### [http://www.alanwood.net/unicode/fontsbyrange.html]).

#####

(#####) — ## #####, ### #####
 ##### BibleTime #####
 ##### (#####). ##### BibleTime #####
 #####. ## ##### # #####, ##
 #####.



F2, Bible Study ##### # ##### #, ##### CTRL+2.

Chapter 5.

#####

BibleTime.
#, ## ##### # BibleTime # ##### #, #####
#, ## ##### #. # ##### # #####
#

####



#####

Open work. This will give you a menu that will allow you to open installed books.



(Ctrl+Q)

Closes BibleTime. BibleTime will ask you if you want to write unsaved changes to disk.

#####



#####

#, #####
BibleTime #.

(F5)



#####

Toggles display of the Bookshelf. Toggle this setting to turn the Bookshelf on the left pane on or off. This can be handy if you need more space for the Mag.

#####



#####

Toggles display of the Bookmarks. Toggle this setting to turn the Bookmarks on the left pane on or off. This can be handy if you need more space for the Mag.

#####



#####

Toggles display of the Mag(nifying glass). Toggle this setting to turn the Mag on the left pane on or off.



#####

Toggles viewing of additional works Toggle this setting to allow you to view additional works in parallel to your current open books.

#####

→

→ ##### (F6)

Toggles Main Toolbar display. Toggle this setting to turn the main toolbar on or off.

→

→ #####

Toggles Navigation in works. Toggle this setting to add or remove the navigation combo box in works. This can be handy to view the full toolbar in the open works

→ #####
 → #####

→ #####
 → #####

→ #####
 → #####

→ #####
 → #####
 ##### # #####


Toggles Toolbars in works. Toggle this setting to add or remove the works icons in the open works.

Toggles tools in works. Toggle this setting to add or remove the tools icons in the open works.


Toggles format. Toggle this setting when editing HTML in Personal Commentaries. It will add or remove the formatting toolbar.

Toggles toolbars in works. Toggle this setting to add or remove the complete toolbar in open works.

#####

 ##### #
 ##### (Ctrl+Alt+F) →

Opens the Search Dialog to search in the standard Bible only. More works can be added in the Search Dialog. A more detailed search description can be found in the Searching in works section.


 ##### #
 #####(##) (Ctrl+O)

Opens the Search Dialog to search in all open works. Works can be added or removed in the Search Dialog. A more detailed search description can be found in the Searching in works section.


#####

 #####
 (Ctrl+W)


#####.

 #####
 (Ctrl+Alt+W)


#####.

 #####
 (Ctrl+J)


#####.

 #####
 (Ctrl+I)

#####.

 #####
 ##### (Ctrl+G)

#####.

 #####
 ##### (Ctrl+H)

#####.

→

→

Controls the basic window arrangement behaviour. In the opening context menu, you can either specify that you want to take care of the window arrangement yourself (Manual mode), Tabbed, Auto-tile vertically, Auto-tile horizontally, Auto-tile or Auto-cascade. Just try them out!

→

Directly saves the current session. This will open a context menu where you can select an existing session to save to. It will be overwritten with your current session. See the next item on how to save to a new session.

→ #####
(Ctrl+Alt+S)

Saves the current session under a new name. This will ask for a new name to save the session to.

→

Loads an existing session. This will open a context menu where you can select an existing session to load.

→

Deletes an existing session. This will open a context menu where you can select an existing session that should be deleted.

#####



BibleTime
→

Opens BibleTime's main configuration dialog. You can configure all kinds of nice settings there to adapt BibleTime to your needs. Please see the Configuring BibleTime section for details.



(F4)
→

Opens a dialog where you can change your SWORD configuration and manage your bookshelf. Please see the Bookshelf Manager section for details.

#####



(F1)

BibleTime #####
#####



→

— ## (F2)
→

Opens a guide on how to study the Bible It is the hope of the BibleTime team that this HowTo will provoke the readers to study the scriptures to see what they say. This particular study guide has been chosen as it takes care not to advocate any particular denominational doctrine. We expect you to read and study the scriptures to understand what they say. If you start with the attitude that you want to have the Lord sow his word in your heart He will not disappoint you.



(F3)

Opens a helpful tip The Tip of the Day provides a useful tip that will assist in the use of BibleTime.

→ ## →

Opens a window about BibleTime project information contains information about BibleTime software version, project

contributors, SWORD software version, Qt software version and the license agreement.

#####

#, ##### # #####.



#####.



#####.



#####.



#####.



#####.



#####.



#####.



#####.



#####.



#####.



#####.



#####.

#####

This is an index of all shortcuts and their corresponding description in the handbook. The shortcuts are sorted (roughly) alphabetical. If you want to directly find out which shortcuts a certain menu item has, you can either look at the entry itself in BibleTime (as it always shows the shortcut), or you can look it in the Main Menu reference.

#####	####
Alt+Left	Moves back in the history of read windows.
Alt+Right	Moves forward in the history of read windows.
Ctrl+Alt+F	Search → Search in default bible equivalent; opens the search dialog to search in the default bible.
Ctrl+Alt+G	Window → Arrangement mode → Auto-tile vertically equivalent; toggle automatic window tiling.
Ctrl+Alt+H	Window → Arrangement mode → Auto-tile horizontally equivalent; toggle automatic window tiling.
Ctrl+Alt+I	Window → Arrangement mode → Auto-tile equivalent; toggle automatic window tiling.
Ctrl+Alt+J	Window → Arrangement mode → Auto-cascade equivalent; toggle automatic window cascading.
Ctrl+Alt+M	Window → Arrangement mode → Manual mode equivalent; toggle manual window placement.
Ctrl+Alt+T	Window → Arrangement mode → Tabbed equivalent; organizes windows with tabs across the top.
Ctrl+Alt+S	Window → Save as new session equivalent; saves current layout as new session.
Ctrl+Alt+W	Window → Close all equivalent; closes all open windows.
Ctrl+A	#####. ## ##### ##### ##### # ##### #####.
Ctrl+C	#####. ## ##### ##### ##### # ##### #####.
Ctrl+F	#####. ## ##### ##### ##### # ##### #####. #####.
Ctrl+G	Window → Tile vertically equivalent.
Ctrl+H	Window → Tile horizontally equivalent.
Ctrl+I	Window → Tile windows equivalent.
Ctrl+J	Window → Cascade windows equivalent.
Ctrl+L	#####. #####. ##### ##### ## #### ##### #####. #####. #####.
Ctrl+N	Search with works of this window.

#####	####
Ctrl+O	Search → Search in open work(s) equivalent; opens the search dialog to search in all currently opened works.
Ctrl+Q	File → Quit equivalent; closes BibleTime.
Ctrl+W	#####
F1	Help → Handbook equivalent; opens the handbook.
F2	Help → BibleStudy HowTo equivalent; opens the BibleStudy HowTo.
F3	Help → Tip of the Day Opens a helpful tip to use BibleTime.
F4	Settings → Bookshelf Manager equivalent; opens the Bookshelf Manager.
F8	View → Show Bookshelf equivalent; toggles display of the Bookshelf.
F9	View → Show mag equivalent; toggles display of the mag(nifying glass).
Shift+Down	View → Auto scroll down
Shift+Up	View → Auto scroll up
Space	View → Auto scroll pause